

31-tone notation

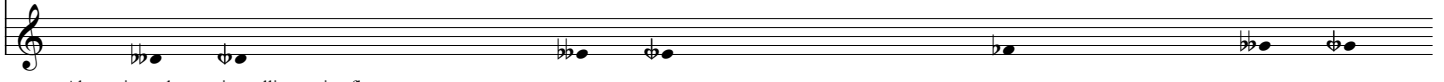
Alternative enharmonic spellings using sharps



Regular 31-tone notation



Alternative enharmonic spellings using flats



A system of three musical staves. The top staff shows three pairs of notes with sharp and double sharp accidentals. The middle staff shows a sequence of 31 notes with standard accidentals. The bottom staff shows three pairs of notes with double flat and flat accidentals.

For practical reasons and ease of reading, it is recommended to **use the simplest accidental spellings** whenever possible.

In other words: preferably **use only sharps, flats, semi-sharps and semi-flats**, as shown on the middle staff.

E sharp, B sharp, F flat and C flat may also be used, if they make more sense in the musical context.

Alternative enharmonic spellings with the more complex accidentals (3/5-tone sharps and flats, double sharps and flats) might be preferable only if notating clear major/minor triads in the context of tonal music.